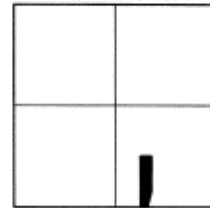




SEC. 3, T 102 N, R 60 W



LOCATION MAP  
SCALE: 1" = 3000'

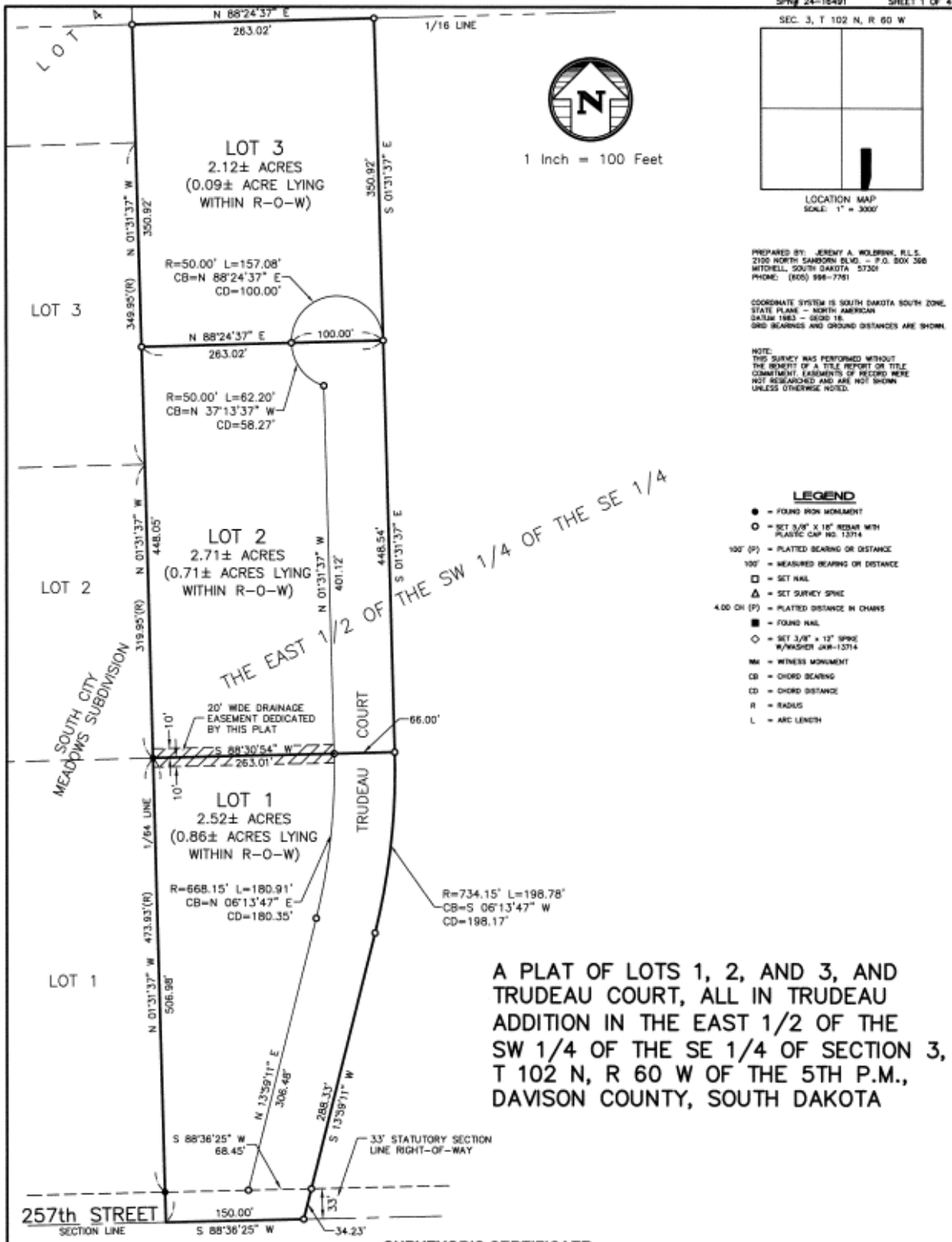
PREPARED BY: JEREMY A. WOLBRINK, R.L.S.  
2130 NORTH SANDHORN BLVD. - P.O. BOX 368  
MITCHELL, SOUTH DAKOTA 57301  
PHONE: (605) 998-7781

COORDINATE SYSTEM IS SOUTH DAKOTA SOUTH ZONE  
STATE PLANE - NORTH AMERICAN  
GALUM 1983 - GRID 18.  
BEG BEARINGS AND GROUND DISTANCES ARE SHOWN.

NOTE:  
THIS SURVEY WAS PERFORMED WITHOUT  
THE BENEFIT OF A TITLE REPORT OR TITLE  
COMMITMENT. EASEMENTS OF RECORD WERE  
NOT RESEARCHED AND ARE NOT SHOWN  
UNLESS OTHERWISE NOTED.

**LEGEND**

- = FOUND IRON MONUMENT
- = SET 3/8" X 18" REBAR WITH PLASTIC CAP NO. 13714
- 100' (P) = PLATTED BEARING OR DISTANCE
- 100' = MEASURED BEARING OR DISTANCE
- = SET NAIL
- △ = SET SURVEY SINK
- 4.00 CH (P) = PLATTED DISTANCE IN CHAINS
- = FOUND NAIL
- ◇ = SET 3/8" X 12" SPIRE W/WASHER JAW-13714
- WM = WITNESS MONUMENT
- CB = CHORD BEARING
- CD = CHORD DISTANCE
- R = RADIUS
- L = ARC LENGTH



A PLAT OF LOTS 1, 2, AND 3, AND TRUDEAU COURT, ALL IN TRUDEAU ADDITION IN THE EAST 1/2 OF THE SW 1/4 OF THE SE 1/4 OF SECTION 3, T 102 N, R 60 W OF THE 5TH P.M., DAVISON COUNTY, SOUTH DAKOTA

# ATTACHMENT 1

## Designations for Thoroughfares

	COUNTY ROADS	MAJOR ARTERIALS	MAJOR COLLECTOR	LOCAL STREET
EAST/WEST	Street	Street	Street	Street
NORTH/SOUTH	Avenue	Avenue	Avenue	Avenue
DIAGONAL	Road	Road	Road	Road
MEANDERING	Road	Road	Road	Road
CUL-DE-SAC	Court	Court	Court	Court
BEGINS AND ENDS ON SAME STREET	Loop	Loop	Loop	Loop
DEAD END	Place	Place	Place	Place
STATE HIGHWAY	SD Highway	SD Highway	SD Highway	SD Highway
FEDERAL HIGHWAY	US Highway	US Highway	US Highway	US Highway